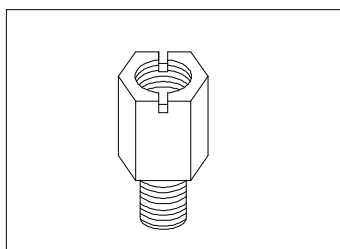
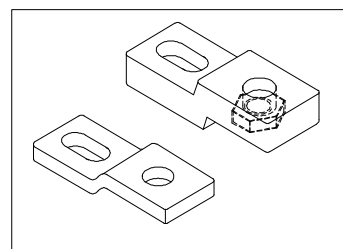


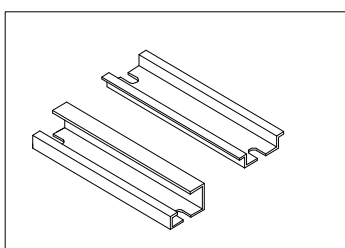
1. Mounting plate in galvanized sheet metal.



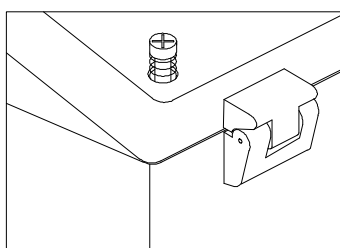
2. Mounting Plate Spacers (4) in Brass Nickel with SS washers to raise the mounting Plate by 12 mm.



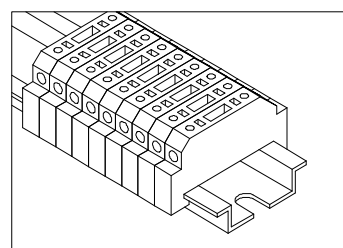
3. External mounting brackets (4) in PolyAmide / SS-304.



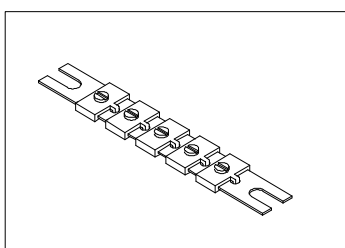
4. DIN rails for fixing terminal blocks. (TS 32/ TS 35)



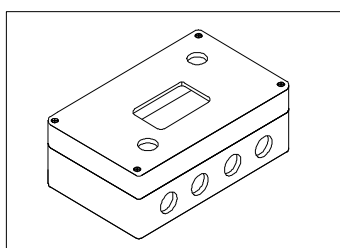
5. External hinge (pair) in polyamide / SS - 304 opening to appr. 150°.



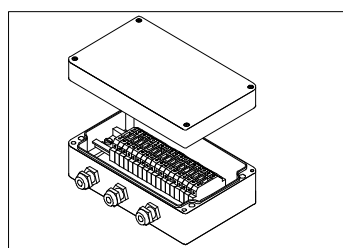
6. Terminal blocks provided as per customer requirements.



7. Earthing strip.



8. Special machining service as per customer requirement.



9. Enclosures fitted with terminal blocks and cable glands as per customer requirements.